








Compel™ Horizontal Light Installation Instructions

(Part #'s: 690UVX)

PARTS NEEDED: (Parts needed will depend on your specific installation, below is an overview of all available parts)			
			
Double Canopy (Max or Standard Lumen)	Single Canopy (Max or Standard Lumen)	Shelf (Max or Standard Lumen)	12" Connector Cable
			
Mounting Brackets (Straight or 30° Mount)	2" Add-On	Pigtails (Lengths Vary)	Class 2 Power Supply (60W or 100W)

Compel Light Safety & Cleaning Instructions

IMPORTANT SAFETY INSTRUCTIONS. READ CAREFULLY FOR YOUR PROTECTION AND SAVE ALL INSTRUCTIONS.

*Disconnect power before installing, adding or changing any component.

*To avoid a hazard to children, account for all parts and destroy all packing materials.

General Care and Cleaning

Long life and the exceptional performance of any equipment is dependent upon the care it receives. To ensure a long life, proper sanitation, and minimum maintenance costs, these lights should be thoroughly cleaned, and wiped down weekly, at a minimum. Surfaces may be cleaned with a mild detergent and warm water to protect and maintain their appearance.

- Do not use abrasive cleaners or scouring pads, as these will damage or scratch the light.
- Do not use solvent, oil or acidic-based cleaners on any interior surfaces.
- Do not use steam or high water pressure hoses to wash the lights. These will cause leaks and poor performance or potential failure.

Compel Light Warranty Information

GENERAL PRODUCT LIMITED WARRANTY

ITC Incorporated under its corporate name or the elio trade name (collectively hereafter referred to as the "Company") warrants, to the original purchaser, that the product will be free of defects in materials and/or workmanship for the period of time set forth herein. This warranty period will begin from the original date of purchase of the product. Except as set forth below, this general product limited warranty will extend for five years. Power supplies also have a 5 year warranty.

MAXIMUM LIABILITY The Company's liability to repair or replace a damaged item shall be limited to the original purchaser of the item at the original invoice price of the damaged unit. Labor and freight will not be included

INSPECTION The Company reserves the right to review the damaged product and the site where the damage occurred. The Company may require the purchaser to ship the item to the Company for inspection. The damaged item must remain available for inspection until the claim is finalized. In the event the Company requests to inspect the product, it agrees to dispatch its findings pertaining to the alleged defective product within 45 days of receiving the product. Whenever claims are settled, the Company reserves the right to be subrogated under any existing insurance policies the purchaser may have.

EVENTS THAT VOID WARRANTY All above warranties are null and void if any one or more of the following events occurs: (a) the item is not provided to ITC for inspection upon the Company's request; (b) the Company determines that the item has been improperly installed, altered in any way or tampered with; (c) the Company determines that the item was not used under normal operating conditions or in accordance with labels or instructions for the item including, (d) the Company determines the product was not properly maintained, and/or; (e) the Company determines that an unauthorized repair, modification, disassembly, or other changes to the product created the alleged defect. In addition to the foregoing, this Warranty does not protect against damage to the product when the Company determines, in its sole discretion, that the damage resulted from acts of God such as lightning, flood, earthquake, war, vandalism, theft, normal-use wear and tear, terrorism, strikes, and labor stoppages. This warranty specifically excludes damage, deterioration or discoloration caused by sunlight or similar ultraviolet rays and/or wavelengths and/or dents, holes or scratches to the unit caused by stones, rocks and/or debris.

EXCLUSIVE REMEDY This Warranty contains the sole warranty of the Company with respect to the product and is given in lieu of all other warranties. There are no other warranties, express or implied, including implied warranties of merchantability or fitness for a particular purpose and any implied warranties that cannot be waived and/or excluded are hereby limited in duration to the terms of this Warranty.

LIMITATION ON LIABILITY In no event shall the Company or any affiliate of the Company be liable for direct, indirect, special, incidental, consequential, or multiple damages arising out of the use of the item, regardless of the legal theory on which such claim is based, even if the Company has been advised of the possibility of such damage. Consequential damages shall include, but are not limited to loss of profits, loss of savings or revenue. Some states do not allow limitations on how long an implied warranty lasts, so the above limitation may not be applicable.

Compel Horizontal Light Installation Instructions

1. Determine the installation location for your fixtures. If using the magnetic mount clips proceed to step 4. For screw mount clips, draw a center line on your mounting surface using a straight edge or the side of the light. Mark the holes for each mounting clip.



2. Screw the mounting clip to the mounting surface using the supplied screws. Do not over torque screws. Over torquing screws will result in damage to the clips and/or stripped out holes.

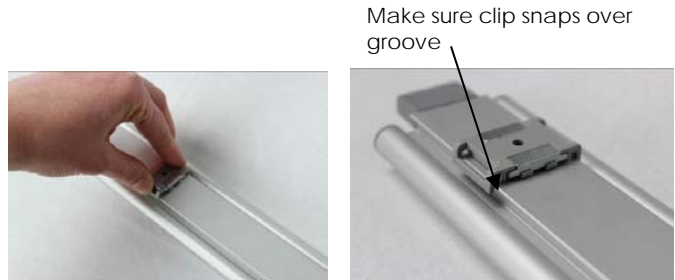


Compel Horizontal Light Installation Instructions

3. Snap light into clips by tilting light into clip.



4. Snap magnetic clips on to lights, ensuring clip completely attaches to groove on light.



5. Plug the 12" connector cord into the light making sure to be careful not to damage the connector pins inside the light. Then, place the light in desired location.



6. If wiring multiple lights use the 2" add-on to connect two lights together. If using only one light simply plug a pigtail (ordered separately) into the 12" connector cord and then wire to the power supply as shown in Figure 1.



7. See wiring diagram below for power supply wiring instructions.

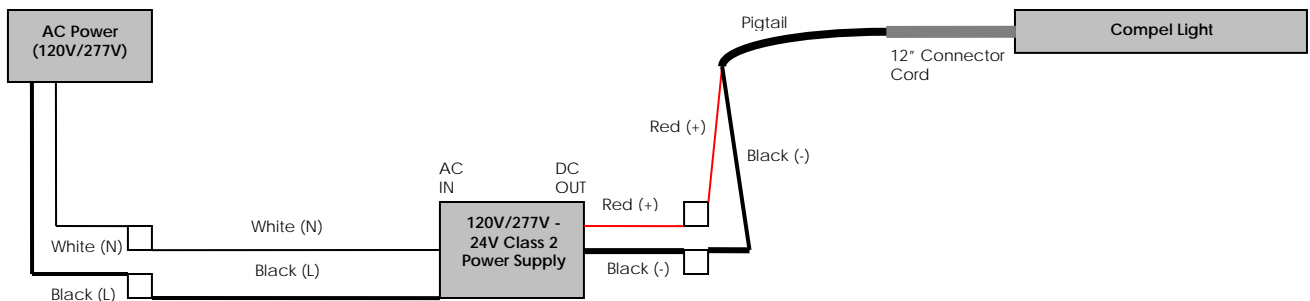


Figure 1 – Wiring Diagram